

HMS Modular Fusion Splice Rack



The new Gepco[®] Brand HMS Modular Fusion Splice Rack provides a field terminatable solution for the deployment of hybrid fiber connectors in an expandable chassis system. With an internal cable management and fusion splice tray system, the HMS allows for all electrical and fiber termination to occur within the chassis, streamlining and protecting the cable breakout. Because the fusion splice occurs within the chassis, not in the connector, almost any type of hybrid connector can be terminated with any type of fusion splicer.

For flexibility in cable options, the HMS features configurable rear cable ports (six plus two) that accommodate a wide range of cable types and combinations. The HMS can be terminated to a variety of combinations of HDC920 9.2mm hybrid fiber, discrete electrical and fiber cables, or up to two HDC3R 3-channel hybrid cables.

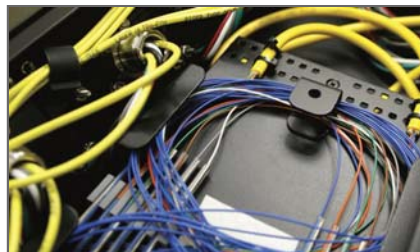
All HMS configurations come with six electrically isolated connector positions for expandability. Each position can be ordered or expanded with SMPTE 304M Plug, SMPTE 304M Socket, or Neutrik[®] opticalCON[®] format connectors, with future connector modules available as they are released.

FEATURES & BENEFITS

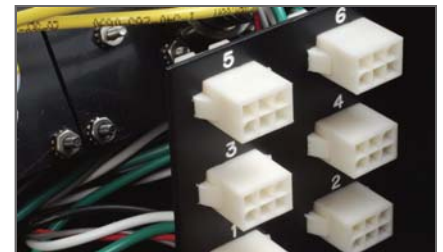
- Internal Fusion Splice Tray
- Internal Cable Management for Security and Streamlined Breakout
- Field Installable and Terminatable
- Splice with Any Type of Fusion Splicer
- Electrically Isolated Connector Mounts
- Rear Cable Ports for Maximum Cable Strain Relief
- Easy to Expand, 6-Channel Frame
- Connector Modules for SMPTE 304M and opticalCON[®] Format Connectors



Rear ports with integrated cable strain relief and seal

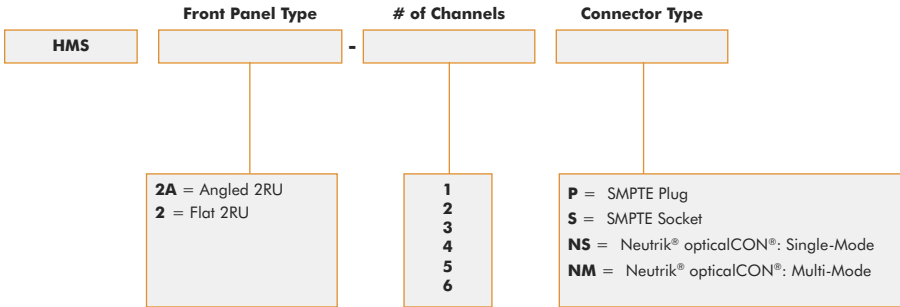


Internal fusion splice tray with cable management



Quick disconnect electrical breakout

Ordering & Product Specifications



Mechanical Specifications

Dimensions: 2RU-3.5" H x 19" W x 6.5" D

Optical Connector Specifications:

LEMO® SMPTE 304M or Neutrik® opticalCON® Fiber Contacts:
 2 per Channel
 -55dB Typical RL, 0.2dB Max IL Connector End
 Opposite End Blunt for Fusion Splicing

Electrical Breakout:

6-Position AMP® MATE-N-LOK® Connector

Rear Panel Cable Management:

(6) Ports for Electrical/Hybrid Fiber Cable
 (2) Ports for Fiber/3-Channel Hybrid Fiber Cable

Included Accessories:

Mating AMP® MATE-N-LOK® Connector(s)
 Fusion Splice Heat Shrink
 Gland Seals for HDP221, HDC920 or HDC920R
 Gland Seals for 2- to 4-Channel Distribution Fiber
 Gland Seals for 6- to 12-Channel Distribution Fiber

Optional Accessories

Part Number	Description	Compatibility Notes
GSKIT-HDP221P	Gland Seal Kit for HDP221P Plenum Electrical Cable	Kit for One Strain Relief
GSKIT-BKFBR-S	Gland Seal Kit for Breakout Fiber: 2-, 4- or 6-Channel Riser or Plenum, 8-Channel Plenum	Kit for One Strain Relief
GSKIT-BKFBR-L	Gland Seal Kit for Breakout Fiber: 8-Channel Riser, 12-Channel Riser or Plenum	Kit for One Strain Relief
GSKIT-HDC3R	Gland Seal Kit for HDC3R 3-Channel Hybrid Cable	Kit for One Strain Relief
HMS-EKIT-P	SMPTE Plug Expansion Module Kit	For HMS Frames
HMS-EKIT-S	SMPTE Socket Expansion Module Kit	For HMS Frames
HMS-EKIT-NS	Neutrik® opticalCON® Single-Mode Expansion Module Kit	For HMS Frames
HMS-EKIT-NM	Neutrik® opticalCON® Multi-Mode Expansion Module Kit	For HMS Frames

